



BOUNDLESS ENERGY™

Mattison Plant (BESS) Site Visit Instructions

(Agenda, Traffic pattern, Parking, and PPE instructions)

Meeting Location:

(Mattison Power Plant)
3046 W Liberty Ave
Tontitown, AR 72762

Airport Nearby:

Northwest Arkansas Regional

Hotels Nearby:

Numerous hotels east of Tontitown near
Springdale on route 412. Approx. 10 min. drive to Plant

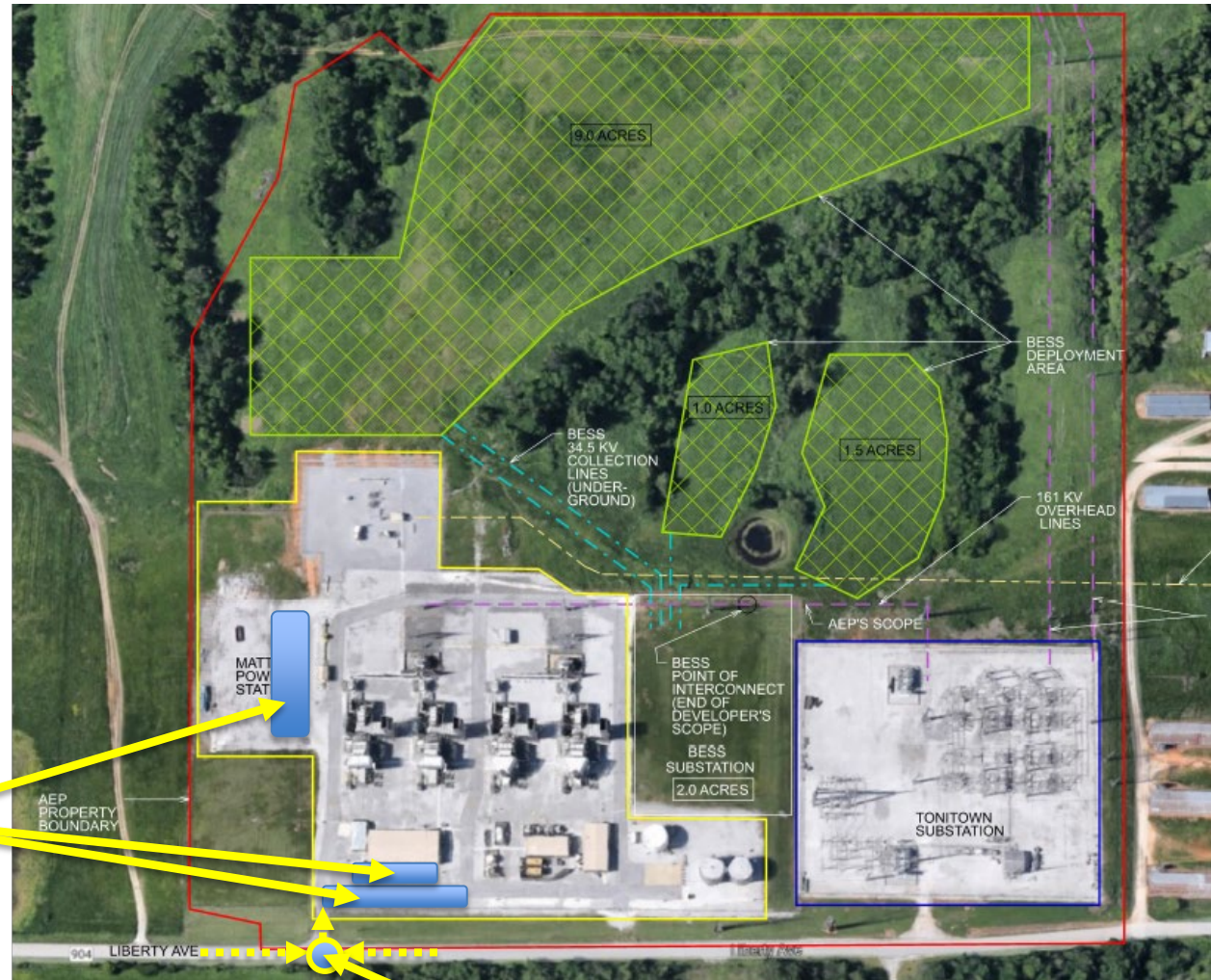


Agenda:
2/20/2024
Arrival 8:00am-8:30am (CST)
Start Time 8:30am (CST)
Meeting Location: (Mattison Power Plant)
3046 W Liberty Ave Tontitown, AR 72762

| Item | Description | Facilitator | Start (CST) | End (CST) |
|------|--------------------------|-----------------------------|-------------|-----------|
| | Arrival | | 8:00 AM | 8:30 AM |
| 1 | Safety/Culture | David LaBrecque/Seth Miller | 8:30 AM | 8:40 AM |
| 2 | Site Layout Discussion | Seth Miller | 8:40 AM | 8:50 AM |
| 3 | Specification Discussion | Seth Miller | 8:50 AM | 9:00 AM |
| 4 | Q&A | Seth Miller | 9:00 AM | 9:15 AM |
| 5 | Break & Walkdown Prep | Seth Miller | 9:15 AM | 9:30 AM |
| 6 | Site Walkdown | Seth Miller | 9:30 AM | 10:15 AM |
| 7 | Q&A | Seth Miller | 10:15 AM | 10:30 AM |

Parking Instructions

- We will gather in break room. Plant personnel with direct upon arrival. If not enough space, we will use the warehouse area
- Parking Areas in blue



PPE Requirements

PPE Required and Site Safety

1. Steel toe shoes (safety toes)
2. Hard hats
3. Safety glasses
4. Hearing protection (If plant is running)
5. Be aware of vehicular and foot traffic
6. Slips, trips, and falls

The plant will have a few extra hard hats and glasses if someone forgets