



BOUNDLESS ENERGY™

# Mattison Plant (BESS) Site Visit Instructions

(Agenda, Traffic pattern, Parking, and PPE instructions)

## **Meeting Location:**

(Mattison Power Plant)  
3046 W Liberty Ave  
Tontitown, AR 72762

## **Airport Nearby:**

Northwest Arkansas Regional

## **Hotels Nearby:**

Numerous hotels east of Tontitown near  
Springdale on route 412. Approx. 10 min. drive to Plant

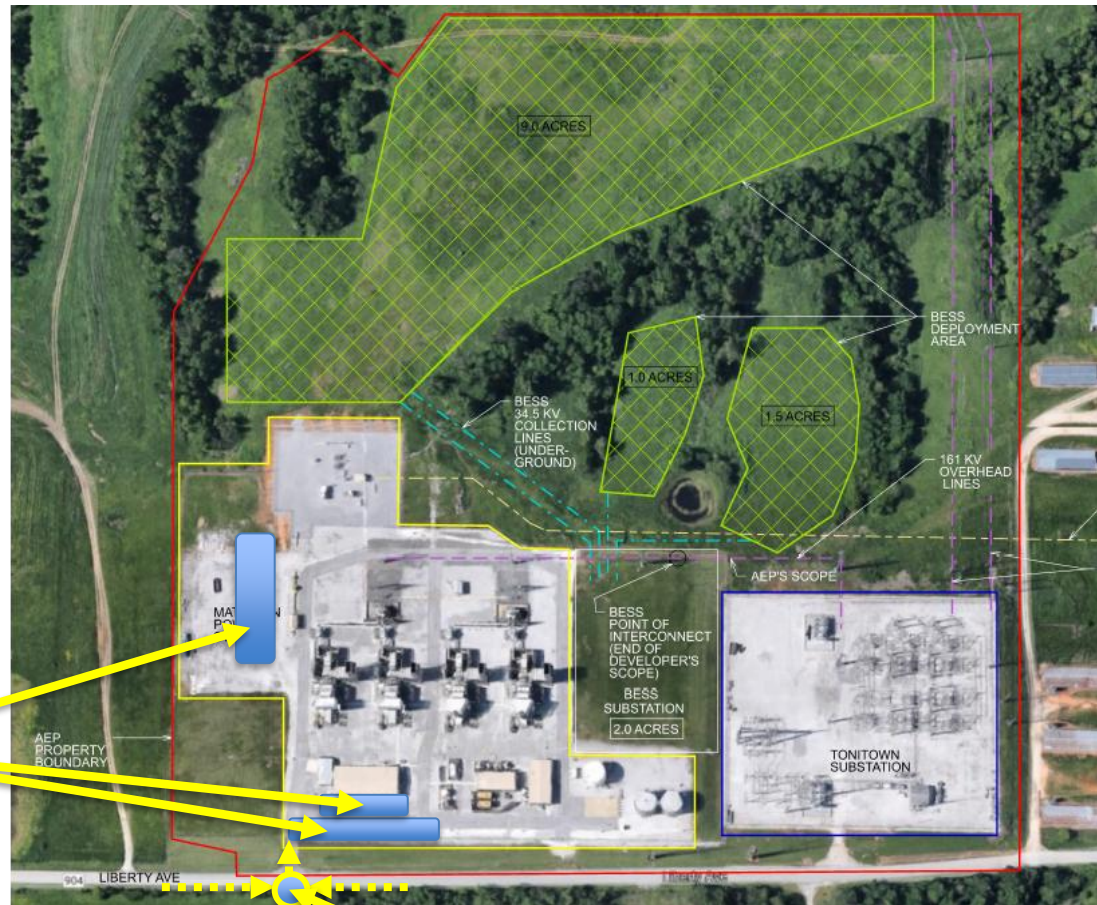


**Agenda:**  
**4/23/2026**  
**Arrival 8:30am-9:00am (CST)**  
**Start Time 9:00am (CST)**  
**Meeting Location:** (Mattison Power Plant)  
3046 W Liberty Ave Tontitown, AR 72762

Item	Description	Facilitator	Start (CST)	End (CST)
	Arrival		8:30 AM	9:00 AM
1	Safety/Culture	Ricky Weber / Andy Hostetler	9:00 AM	9:10 AM
2	Site Layout Discussion	Robert Massingill	9:10 AM	9:20 AM
3	Specification Discussion	Robert Massingill	9:20 AM	9:30 AM
4	Q&A	AEP Team	9:30 AM	9:45 AM
5	Break & Walkdown Prep		9:45 AM	10:00 AM
6	Site Walkdown	AEP Team	10:00 AM	10:45 AM
7	Q&A	AEP Team	10:45 AM	11:00 AM

# Parking Instructions

- We will meet in the parking lot. In case of inclement weather, we will gather in break room. Plant personnel will direct upon arrival.
- Parking Areas in blue



# PPE Requirements

## PPE Required and Site Safety

1. Steel toe shoes (safety toes)
2. Hard hats
3. Safety glasses
4. Hearing protection (If plant is running)
5. Be aware of vehicular and foot traffic
6. Slips, trips, and falls
7. Appropriate Clothing Required